



Prospectus

Derrychrin Primary School

CONTENTS

Welcome

Derrychrin PS Information

Mission Statement

School Vision and Aims

Admissions

Pastoral Care

Child Protection and Safeguarding

Religious Education

The Curriculum

Special Educational Needs

Assessment

Uniform

School Day

Homework

Extra-Curricular Activities

Communication with Parents

School Community Involvement

Charging and Remission Policy

P1 Induction & School Communication

Home – School Partnership

Contact and Reference Information

WELCOME

Dear Parents / Guardians,

Welcome to Derrychrin Primary School – a caring school where the whole school community shares a common goal – to do the very best we can for all the children in our care.

Thank you for taking the time to look through our prospectus which I am sure will provide you with lots of information about our school.

Our overriding aim is to help children develop into mature, responsible young men and women who have a feeling of self-worth and importance. To do this it is essential that we work in partnership with parents and the wider community. Indeed, the success of our school depends on good relationships between staff, pupils, parents and our school community.

The purpose of this prospectus is to give you an insight to our school, how it operates and what we offer our pupils at Derrychrin Primary School. It provides you with information about our school and an insight into our policies and practices.

We are committed to providing the fullest of opportunities for all pupils to fulfil their potential in a happy, safe and secure environment.

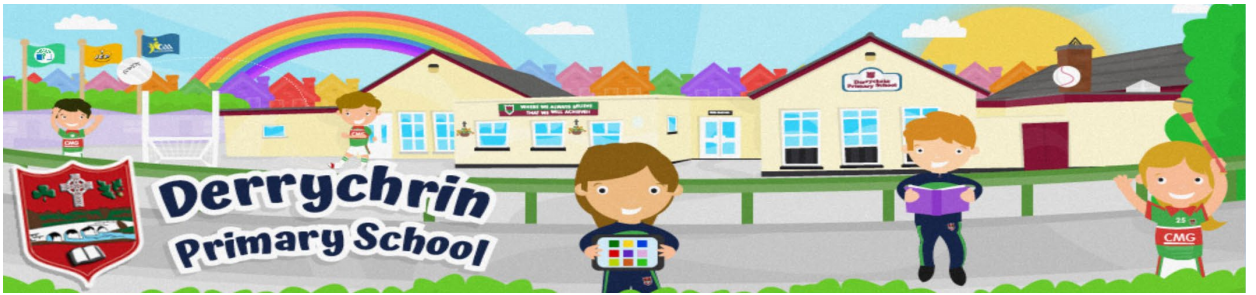
Of course no prospectus can convey the real ethos or atmosphere of a school. If you would like any further information, please contact the school and we will happily answer your questions and queries. We invite you therefore, to visit our school and experience the warm, family atmosphere in Derrychrin PS.

We look forward to meeting you and hope you will share with us in making this a successful and memorable period in your child's life - school days which your child will recall with happiness and pleasure.

Yours sincerely,

Mr Ciaran McElroy

DERRYCHRIN PRIMARY SCHOOL



Derrychrin PS is a Catholic maintained co-educational primary school. It is the parish school of St. Patrick's Ballinderry.

Originally built in 1866, the school has excellent facilities. The school is comprised of seven classrooms, an Assembly Hall, Reading Resource Room, Library and Canteen.

Each classroom has a new CleverTouch interactive whiteboard to support teaching and learning. The grounds include three separate all weather areas, multi-sports pitch, a new climbing frame area and an outdoor garden area.

The current teaching staff includes the Principal, 7 teachers, 8 teaching assistants, a school secretary, a building supervisor, crossing patrol and 4 canteen staff.

Current Enrolment number is 206.

Admissions number 29.

MISSION STATEMENT

Derrychrin PS is a Catholic co-educational school seeking to promote a caring ethos throughout the school community. We aim to serve the families of our community by providing an education of the highest quality and delivering a curriculum for the development of the whole child in a happy, caring and safe environment reflecting the highest standards of pastoral care. In achieving this we recognise that each child is a valued and unique member of God's community.

Our school values and motto represent our warm family atmosphere in a positive way that is meaningful to the whole school community. They are displayed by everyone daily and are easily discernible, reflecting the overall ethos and aspirations of the school community.

We encourage our whole school community to embrace our motto along with our values to help shape future choices in everything we do.



SCHOOL VISION AND AIMS

We believe that each child will succeed as we provide opportunities :

- To reflect the religious ethos of our community and ensure that each child feels a valued and special member of the school community.
- To provide for the educational needs of pupils of all abilities.
- To experience enriching programme of extra curricular activities and educational visits.
- To experience a caring ethos, based on the values of Catholic education, within which all pupils feel accepted, respected and loved as individuals.
- To provide a broad, balanced and challenging curriculum appropriate to the needs of each pupil at his/her stage of development which reflect our high expectations and culture of achievement.
- To create a love and motivation of learning through innovative teaching and the development of thinking skills and mental strategies.
- To foster a happy, challenging atmosphere encouraging successful learning and development in a stimulating environment.
- To develop an attitude which leads to self-discipline, independence, courtesy, good manners and respect for everyone.
- To provide opportunities for pupils to achieve success in a variety of contexts, promoting positive self-esteem.
- To develop a knowledge and understanding of their own environment and respect for other traditions, values and beliefs within the context of education for mutual understanding.
- To foster and develop a natural and positive relationship between home, school, church and the wider community.

ADMISSIONS

Applications for P1 admissions are made in January of each year and parents will be kept informed of admission times and dates as well as being led through an induction programme in the Summer Term.

The school's enrolment number is 206 and the school's admission number is 29. We currently operate with seven straight classes.

The Board of Governors has drawn up the School's admissions criteria and has delegated to the Principal its function and responsibilities in relation to the application of these criteria and the admissions of pupils to the School.

On selecting children for admission to the school, the Board of Governors will apply the criteria as set out by the school on the Education Authority website.

In the event of the school being oversubscribed the Governors will select children for admission to Primary One using the admission criteria set out in the admissions policy. The criteria will be applied in the order in which they are set down. Priority will be given at all times to pupils regarded by the Board of Governors, on the basis of supporting evidence by parents and/or statutory agencies, as having special circumstances (e.g. medical or social factors).

To view admissions criteria and to complete the P1 Admissions form online please visit www.eani.org.uk/parents/admissions

PASTORAL CARE

In Derrychrin PS everyone is made to feel welcome, as an inclusive school, we embrace diversity. We create an environment and ethos that is conducive to learning, happiness and developing a sense of belonging. In our school, the children will develop as much as a result of the caring atmosphere as from the formal curriculum. Our school also reflects the wide range of ethnicities and cultures from around the world. The children show great respect, care and understanding for each other.

The school's relevant Pastoral Care/ Child Protection policies are available on the school's website:



“The school has comprehensive arrangements in place for safeguarding children. These arrangements reflect the guidance issued by the Department of Education. In discussions with the inspectors, children in key stage 2 reported that they are very happy and secure in school and know what to do if they have any concerns about their well-being.”

ETI Report November 2016

CHILD PROTECTION AND SAFEGUARDING

Derrychrin PS is fully committed to the care and protection of all our children. Everyone who works in our school; teachers, non-teaching staff and volunteers have clear guidance on the action which is required where abuse or neglect of a child is suspected.

The welfare of each child is paramount and the Board of Governors have a Safeguarding Team who closely monitor all aspects of Child Protection and Safeguarding within the school.

The Child Protection and Safeguarding Policy is available on our school website.



Derrychrin Primary School

Safeguarding team

Here at Derrychrin we are committed to the safeguarding of all pupils and staff

			
Child Protection Mr C McElroy Principal	Child Protection Mr M O'Neill Designated Teacher	Child Protection Miss R McVey Deputy Designated Teacher	Child Protection Mrs G Mullan Designated Governor For Child Protection

RELIGIOUS EDUCATION

Derrychrin PS is a vibrant part of the parish and we liaise closely with our Parish Council to create opportunities for our pupils to contribute to the life of the Parish.

Our religious education programme, is based on the Grow in Love series. It is not confined to the timetabled programme within the school, but reflects the caring ethos throughout the whole life of our school. The Grow in Love programme prepares the children for the Sacrament of Reconciliation, First Holy Communion and Sacrament of Confirmation and parents are invited to attend meetings and participate fully in their children's Sacramental preparation.

The school's relevant Pastoral Care/ Child Protection policies are available on the school's website:



THE CURRICULUM

The Northern Ireland Curriculum sets out the minimum requirement that should be taught at each key stage. Within these requirements, teachers have considerable flexibility to make decisions about how best to deliver the curriculum taking into account the needs of the children. Through effective delivery of the curriculum competences, we aim to enhance and integrate the the pupils' Cross Curricular Skills and Thinking Skills and Personal Capabilities (TSPC) in the following key areas.

- Self-Management
- Working with Others
- Problem Solving
- Managing Information
- Thinking creatively

In Derrychrin PS offers a broad and balanced curriculum so all pupils will receive their full entitlement under the Northern Ireland Curriculum. It is planned to take into account the uniqueness of each child so that it is meets the needs of every child and it encompasses a range of learning activities. The World Around Us themes allow the children to make cross-curricular links within their learning and become independent learners with excellent communication and social skills, ready to continue their learning pathway at post-primary.

The curriculum is divided into the following areas of learning.

- Language & Literacy,
- Mathematics and Numeracy,
- The Arts (Art & Design, Drama and Music),
- The World Around Us (Geography, History, Science and Technology)
- Personal Development and Mutual Understanding
- Physical Education
- Religious Education

SPECIAL EDUCATIONAL NEEDS

Our school has a comprehensive monitoring and screening programme in place and focuses on developing early intervention strategies to support children who have individual needs in their learning. We use a range of assessment methods to monitor how each child is progressing.

Subsequently, a child identified with a learning need or a barrier to learning will access learning support either in a one-to-one setting or in small group support. The focus is on developing key Literacy and Numeracy skills and should a child's problems present as more complex, then the school will enlist the help of external professional agencies.

Parents are central to supporting their child and are kept fully informed of any such special provision or support. Derrychrin PS is an all-inclusive school and all children are welcome. Individual Education Plans are drawn up to ensure a carefully planned programme is in place for children with Special Educational Needs. Teachers monitor, assess and record children's learning and progress regularly using a range of strategies to ensure needs are being met and to set targets for the future.

The Special Educational Needs Co-ordinator liaises closely with the Principal and staff to ensure that the needs of all children are being met by supporting staff with the formulation of individual education plans and resources.

The school currently have staff trained in reading recovery and Catch Up Literacy and Numeracy.

"The quality of the pastoral care of the children is outstanding; there is a very strong sense of community and a very caring, inclusive and supportive ethos throughout the school. There are excellent working relationships across the wider school community and the staff team work energetically and tirelessly to support the individual needs of the children in their care."

ETI Report November 2016

ASSESSMENT

Assessment is an integral part of the learning process and we recognise that the main purposes of assessment are:

1. *To observe in a systematic way each child's progress.*
2. *To provide information about children that will assist the teacher planning future work.*

Each child's progress is monitored carefully through a range of assessment techniques and strategies. For children with individual needs, a comprehensive programme of class-based teacher support is available.

All parents are kept fully informed of their child's progress. The school will assess and report annually on each child's progress in:

- Areas of Learning.
- Cross-Curricular Skills.
- Thinking Skills and Personal Capabilities.

Children are assessed continually by the teachers using both formative and summative assessments. The school uses the GL assessment package which includes Cognitive Ability Testing (CAT4) class and standardised tests in Maths and English, called PTE and PTM. This will enable the class teachers to monitor a child's progress from Primary 3 to Primary 7, ensuring that the children are working at the level appropriate with their ability.

It will enable the class teacher to have a robust, and comprehensive summary of each child's academic progress and measure the level of improvement year on year. This programme will also assist our early intervention strategy for those children who have barriers to their learning.

Records of attainment and progress are kept and these are passed on to each successive teacher. This is of vital importance in assisting continuity in planning the next stage in each child's learning process.

UNIFORM

We expect children to wear our school uniform at all times as it gives a sense of identity, reflects the individuality of the school and contributes to our school ethos. *School uniform can be purchased from O'Neill's Store Magherafelt.*

All items of clothing should be marked clearly with pupil's name

oneills

NEW SCHOOL UNIFORM | PE KIT

JERSEY



MASON HZ SQUAD TOP



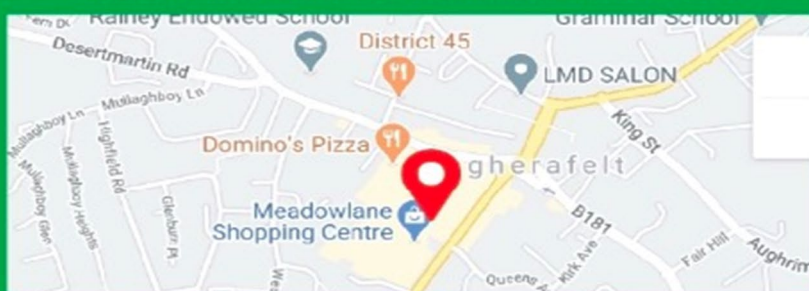
PANEL SHORTS



NEVIS SKINNY PANTS



AVAILABLE FROM ONEILLS.COM
AND AT THE O'NEILLS SUPERSTORE, MAGHERAFELT



SCHOOL DAY

Pupils Arrive: **8:30am.**

Classes Begin: **8:45am.**

Breaktime: **P1-P4 (10:30-10:45am)**

P5/P6/P7 (10:50-11:05am)

Lunchtime: **P1-P4 (12:00-12:50pm)**

P5/P6/P7 (12:40-1:25pm)

P1-P2 Classes Ends: **1:45pm**

P3-P4 Classes Ends: **2:40pm**

P5-P7 Classes Ends: **2:45pm**



HOMework

Homework is regarded as an integral part of every pupil's learning. Homework is an essential aspect of the teacher's assessment of learning, as it enables the class teacher to monitor how effective their teaching has impacted with the pupils.

Parents are encouraged to support their child with their homework each evening as they are positively involved in their child's learning and in the development of positive work habits. Parents are encouraged to sign reading records weekly. We encourage our parents to contact their child's teacher if there are any difficulties regarding homework.

Against this must be balanced each child's need for recreation and the development of personal interests and hobbies.

Homework set by the class teacher is linked to work covered in class and should be supervised and signed by parents.

Pupils need the discipline of home study and accept it as an extension of their school work. The amount of time spent on homework can vary from 20 minutes for infants to an hour, sometimes, for P6 and P7. The homework policy is available on the school's website.



EXTRA-CURRICULAR ACTIVITIES

Derrychrin PS considers extra-curricular activities to be a very valuable dimension in the education of our children. We aim to provide every child with a range of physical activities which will not only develop skills and teamwork but make children aware of the benefits in terms of healthy life styles and physical well-being.

Each class receive weekly PE lessons where all aspects of the Northern Ireland Curriculum are implemented and throughout Key Stage Two have the opportunity to attend swimming lessons. The school also benefits from the skills of coaches from the Department of Education/Ulster GAA, Derry County Board With teacher expertise, parental/family involvement and external agencies we provide a wide range of extra-curricular activities throughout the school year.

Extra-Curricular activities include:

- Gaelic Football
- Camogie
- Soccer
- Basketball
- Hockey
- Art
- Tin Whistle

- Guitar
- Golf
- Drama
- ICT
- Gardening
- Swimming
- Dance



COMMUNICATION WITH PARENTS

It is our aim to involve parents in the education of their children and to inform them as fully as possible about their children's progress.

The initial contact you as a parent will have with the school will be through our open day. All parents of prospective P1 pupils will be invited to meet with the Principal and then the class teacher at an afternoon session in the school during the first fortnight in June. Please use this occasion to bring any medical condition affecting your child to the attention of the class teacher.

Once your child commences school, there are many opportunities for staff and parents to meet. Some of these occasions will be on a formal basis and you will be notified in due course of the dates e.g.

- ☐ Baseline/Induction progress meeting with class teacher in Term One
- ☐ Parent/Teacher Interviews with the class teacher in November
- ☐ An annual school report at the end of Term 3
- ☐ Transfer Procedure Interviews
- ☐ Religious Education
- ☐ Sacramental preparation meetings

There are also opportunities to express views and opinions through:

- ☐ Parental consultation documents
- ☐ Surveys and questionnaires.
- ☐ Newsletters
- ☐ School News Updates

Should you wish to receive any further information about the school or to discuss any matter concerning your child, do not hesitate to contact the school and arrange an appointment with Principal or class teacher.

SCHOOL COMMUNITY INVOLVEMENT

At Derrychrin P.S we aim to involve parents and the community as much as possible in the life of the school for the benefit of all our pupils. We encourage parents to keep in touch with the progress of their child and become actively involved in the life of the school through:

- School Newsletter.
- An open door policy for parents to arrange meetings with staff to discuss the progress of their child.
- Formal parent teacher meetings.
- A written progress report at the end of the school year.
- Attendance at a variety of yearly celebrations, assemblies and liturgical events.
- Strong parental support for fundraising.
- Assisting our extra-curricular activities

We have a very active PTA 'Friends of Derrychrin' who support the school with fundraising activities throughout the year to fund the purchase of new resources.

It is a great way to get to know the school and become involved in the school community. New members are always welcome.



CHARGING AND REMISSION POLICY

Education in Derrychrin Primary School is provided free of charge for all lessons and activities connected with the child's entitlement under The Education Reform Order.

The school will, as it has done in the past, appeal to parents from time to time for voluntary donations but it is stressed that no child will be disadvantaged in any way if parents choose not to make a contribution.

The school may take part in optional extras which are not connected with the school's formal curriculum, such as visits to the theatre/school trips or other educational visits. Charges will be made for these but it is again stressed that failure to participate in these will not affect a child's performance at school. Written Parental consent will be required before a child participates in school trips.

We must stress how grateful we are for the support we have received in the past in the form of voluntary contributions from all members of the local community.

For school information, policies and other documents, please contact the school office or you can view all information on our school website

www.derrychrinps.org

P1 INDUCTION & SCHOOL COMMUNICATION

Beginning School in September for P1 Children

In preparation for beginning school in September, there will be an Induction Day in June for all new P1 pupils.

There will be short information session for parents, to outline the P1 Curriculum and how to prepare your child for starting school in September.

You can follow our school website and Twitter account to receive all news updates and upcoming events.

School Website : www.derrychrinps.org

School Twitter account : [@DerrychrinPS](https://twitter.com/DerrychrinPS)

HOME - SCHOOL PARTNERSHIP

I hope you now have some idea of the rich and varied life your child will have while a pupil at Derrychrin Primary School.

You can be assured that, by working in partnership, your child will receive the highest standard of teaching from our team of committed teachers, and that his/her happiness and well-being will be our concern at all times during his/her years at Derrychrin PS.

Yours sincerely,

Ciaran McElroy

Principal



CONTACT AND REFERENCE INFORMATION



DERRYCHRIN PRIMARY SCHOOL

30 Drumenny Road

Cookstown

Co Tyrone

BT80 0BX

Principal: Mr Ciaran McElroy

Tel / Fax: 028 86737456

Email: info@derrychrin.cookstown.ni.sch.uk

Website: www.derrychrinps.org

**"Where We Always Believe
That We Will Achieve!!"**